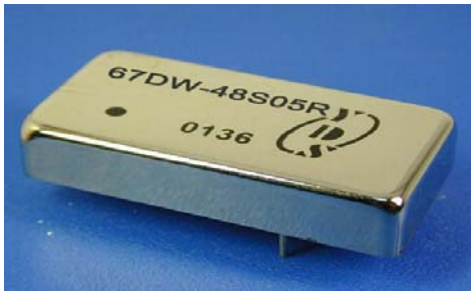




## Wide Input Voltage Range 15 Watt Dc-Dc Converter



### FEATURES:

- 4:1 Wide Input Voltage.
- 15 Watt Package.
- Efficiency To 80%
- PI Input Filter.
- 1500Vdc Isolation
- MTBF:>1,500,000 hrs
- Operating Temperature:-40°C TO +100°C



Specifications typical at TA=25°C, nominal input voltage and rated output current unless otherwise specified

Part Number	Input Voltage	Input Current		Output Voltage	Output Current	Efficiency	Capacitor Load
	Vdc	No-Load (mA TYP)	Full Load (mA TYP)	Vdc	Full Load (mA)	%TYP	uF TYP
67DW-24S05RNL	9-36	25	753	5	3000	83	3300
67DW-24S09RNL	9-36	25	744	9	1666	84	680
67DW-24S12RNL	9-36	25	735	12	1250	85	680
67DW-24S15RNL	9-36	25	726	15	1000	86	470
67DW-24D05RNL	9-36	25	753	±5	±1500	83	±2200
67DW-24D09RNL	9-36	25	744	±9	±833	84	±470
67DW-24D12RNL	9-36	25	735	±12	±625	85	±470
67DW-24D15RNL	9-36	25	726	±15	±500	86	±330
67DW-48S05RNL	18-72	20	376	5	3000	83	3300
67DW-48S09RNL	18-72	20	372	9	1666	84	680
67DW-48S12RNL	18-72	20	367	12	1250	85	680
67DW-48S15RNL	18-72	20	363	15	1000	86	470
67DW-48D05RNL	18-72	20	376	±5	±1500	83	±2200
67DW-48D09RNL	18-72	20	372	±9	±833	84	±470
67DW-48D12RNL	18-72	20	367	±12	±625	85	±470
67DW-48D15RNL	18-72	20	363	±15	±500	86	±330

### Input Specifications

Parameters	Conditions	Min	Typ	Max	Units
Voltage Types				4:1	
Filter	PI TYPE				

### Output Specifications

Parameters	Conditions	Min	Typ	Max	Units
Voltage Tolerance				±2	%
Short Circuit Protection	Continuous				
Line Regulation				±0.5	%
Load Regulation	Single(25% To 100% F.L)			±1.0	%
Load Regulation	Dual(25% To 100% F.L)			±2.0	%
Ripple & Noise	BW=DC To 20MHz			100	mVp-p
Transient response setting time	50% load step change		350		us

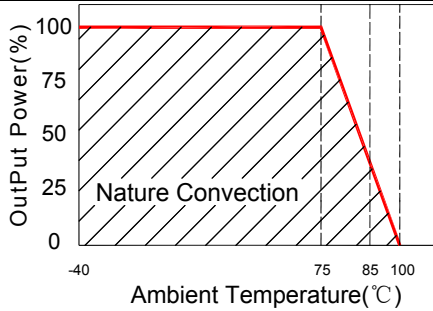
### General Specifications

Parameters	Conditions	Min	Typ	Max	Units
Isolation Resistance	500Vdc	1000			MΩ
Switching Frequency			300		KHz
Operating Temperature		-40		100	°C
Humidity	Non Condensing			95	%
Cooling	Free air Convection				
Case material	Nickel Coated With Non-Conductive Base or Black Coated Copper With Non-Conductive Base				
Weight			36.5		g
Dimensions			50.8x25.4x10.2		mm
Potting Material	Epoxy (UL94V-0 rated)				
Radiated Emissions	EN55022		CLASS A		
Conducted Emissions	EN55022		CLASS A		

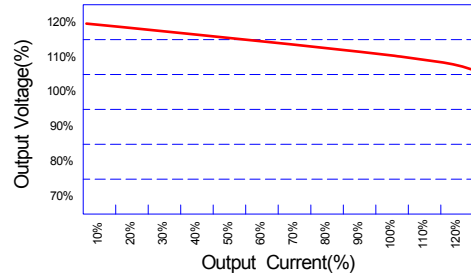


Wide Input Voltage Range 15 Watt Dc-Dc Converter

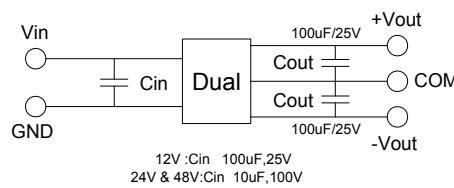
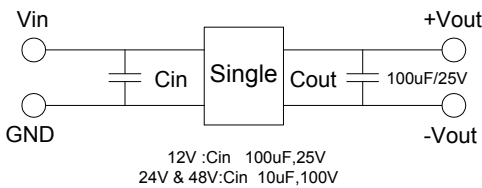
Temperature Derating Graph



Tolerance Envelope Graph



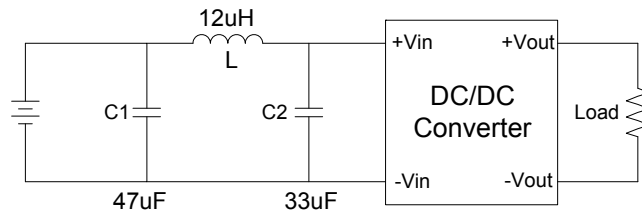
Recommended Test Circuit



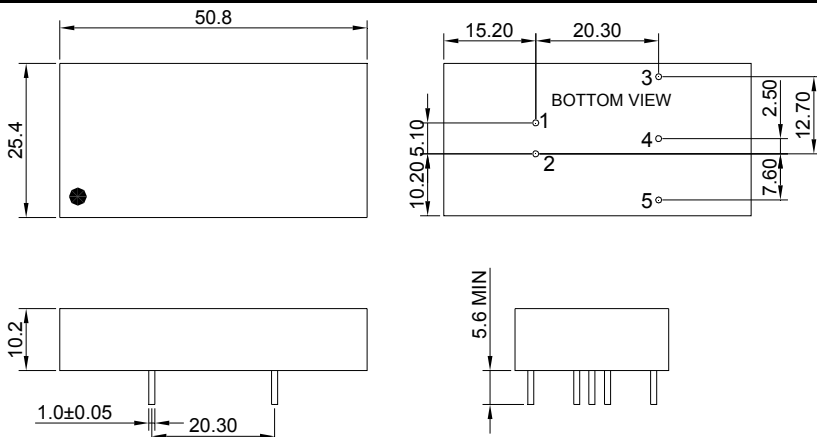
Part Number

67DW - 24 S 05 R NL  
 A B C D E F  
 A:Series  
 B:Input Voltage  
 C:Single(S)Dual(D)  
 D:Output Voltage  
 E:Regulated(R)  
 F:RoHS Version

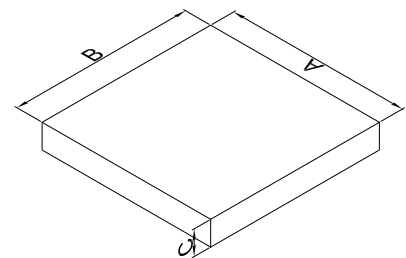
Exceeding the absolute ratings of the unit could cause damage, It is not allowed for continuous operating



Markings and dimensions



Packaging



Size(mm)		
A	B	C
210.00	210.00	30.00

UNIT:mm XX.X±0.5 XX.XX±0.25

PIN Connection

PIN	1	2	3	4	5
SINGLE	+Vin	-Vin	+Vout	NO PIN	-Vout
DUAL	+Vin	-Vin	+Vout	COM	-Vout